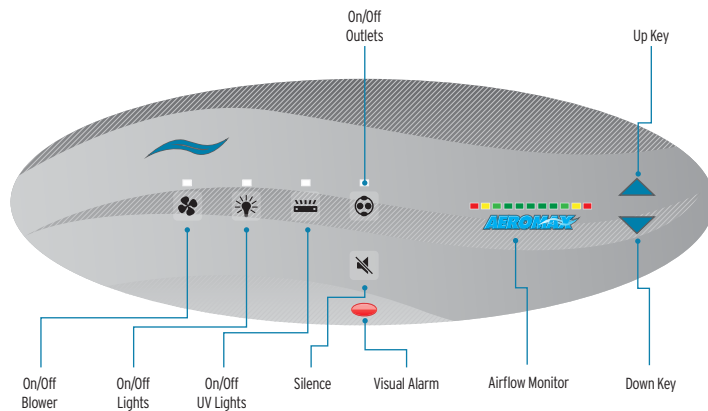
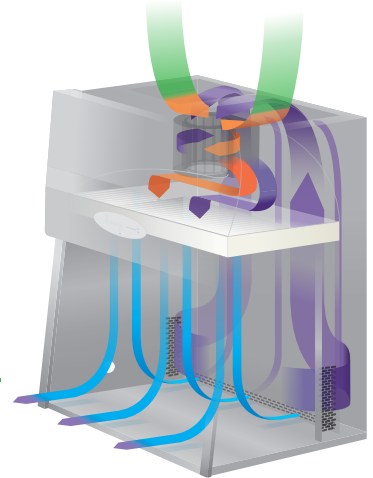




The AireGard™ Vertical Laminar Airflow Workstations (LAFW) model NU-140 is designed as a table top cabinet that features the newest technologies in laminar airflow design, materials and manufacturing processes. The clean workstation can be used where clean airflow per ISO 14644-1 is required for the preparation of injectable drugs, IV solutions, tissue culture, optics, microelectronics, etc. The clean workstation is used to protect the product from contamination. The clean workstation is optionally available with a base stand, placing the work surface at 30" (762mm) or 36" (914mm). A significant number of design innovations give the NuAire Laminar flow equipment superior performance qualities in airflow, lighting, noise levels and vibration.

### Performance Features:

- True laminar vertical air of 90 fpm (0.46 m/s)
- 250% Filter load capacity (±10 Year Average depending on laboratory environment)
- Meets performance requirements IEST-RP-CC002.4 and ISO 14644-1
- ISO Class 5 Air Quality



### AEROMAX

Electronic Control system monitors and displays airflow system performance via PressureFlow - A specialized digital pressure transducer. Audible and visual alarms will trigger in the event of high or low airflow status.



#### Specifications

Model	Width Size (nominal)	Electrical* (all sizes)	Interior Dimensions (W x D x H) [mm]	Exterior Dimensions (W x D x H) [mm]	Access Opening	Net Weight
NU-140-330	3 ft [0.9 m]	115 VAC / 60 Hz E: 230 VAC / 50 Hz-60 Hz	33 7/8 x 26 3/4 x 30 1/8 [860 x 679 x 765]	38 x 32 x 58 [965 x 813 x 1473]	30 1/8 [765 kg]	300 lbs [136 kg]
NU-140-430	4 ft [1.2 m]		45 7/8 x 26 3/4 x 30 1/8 [1165 x 679 x 765]	50 x 32 x 58 [1270 x 813 x 1473]	30 1/8 [765 kg]	355 lbs [161 kg]
NU-140-530	5 ft [1.5 m]		57 7/8 x 26 3/4 x 30 1/8 [1470 x 679 x 765]	62 x 32 x 58 [1575 x 813 x 1473]	30 1/8 [765 kg]	420 lbs [191 kg]
NU-140-630	6 ft [1.8 m]		69 7/8 x 26 3/4 x 30 1/8 [1775 x 679 x 765]	74 x 32 x 58 [1880 x 813 x 1473]	30 1/8 [765 kg]	595 lbs [270 kg]

#### Standard Features

AeroMax Electronic Control System  
 Ultra-high Efficiency DC/ECM Motor  
 PressureFlow Airflow Monitor and Control  
 Attenuation Vibration Control  
 HEPEX Zero Leak Airflow System  
 True Laminar Airflow  
 Pre-Filter System  
 Rear Wall Recirculation Grill for Airflow Uniformity  
 Metal Frame Supply Separatorless HEPA Filter 99.99% efficient @ 0.3 micron  
 ISO Class 5 Air  
 Metal Diffuser Over Supply Filter  
 Cool White Fluorescent Lighting  
 Stainless Steel Sidewalls with Cord Pass Through

Stainless Steel Worksurface with PVC Core  
 Ergonomically Designed Work Zone  
 Power Cord

#### Optional Features & Accessories

LED Lighting  
 Polycarbonate Sidewalls with Cord Pass Through  
 Nevamar Work Surface with PVC Core  
 IV Bar with 3 Height Locations, 6 Hooks  
 Outlet Options (Below Worksurface, Dedicated Power Cord)

- Duplex Outlet 15A, 125V, NEMA 5-15R
- GFI Duplex Outlet 15A, 125V, NEMA 5-15R
- Type D Outlet (230V)
- Type E Outlet (230V)
- Type F Outlet (230V)
- Type G Outlet (230V)
- Type H Outlet (230V)
- Type I Outlet (230V)

- Type J Outlet (230V)
- Type K Outlet (230V)
- Type M Outlet (230V)

Service Valves  
 Seismic Brackets  
 Ergotron Arm Computer Monitor and Keyboard Mount  
 Base Stand Options  
 Pull-out Storage Trays  
 Adjustable Footrest  
 Stainless Steel Turn Table  
 Custom Solutions



#### Popular Accessories/Built-in Options



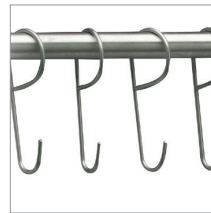
**Telescoping Base Stand**  
 - Work Surface Height Range 30" - 36" (762 - 914 mm)  
 - Feet Options: Leg Levelers or Casters  
 - Shelf  
 - OSHPD OPM Seismic Approved



**Motorized Base Stand**  
 - Work Surface Height Range 30" - 36" (762 - 914 mm)  
 - Feet Options: Leg Levelers or Casters



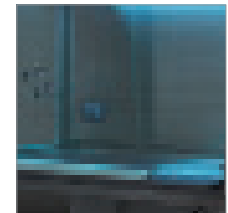
**Ergotron® arm for monitor and keyboard/mouse**



**IV Bar**  
 - 3 Height Locations  
 - 6 Hooks



**Exterior LED Lighting**



**Ultraviolet (UV) Light**

Your NuAire Partner

